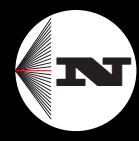
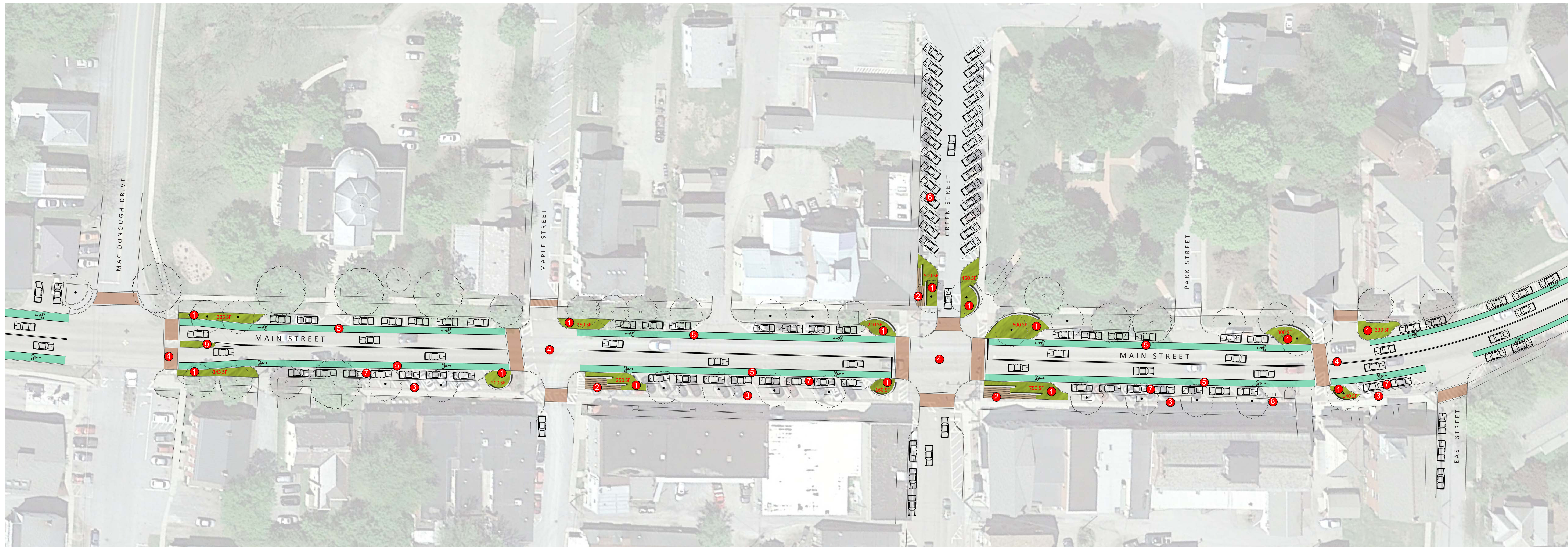


KEY SITE IMPROVEMENTS

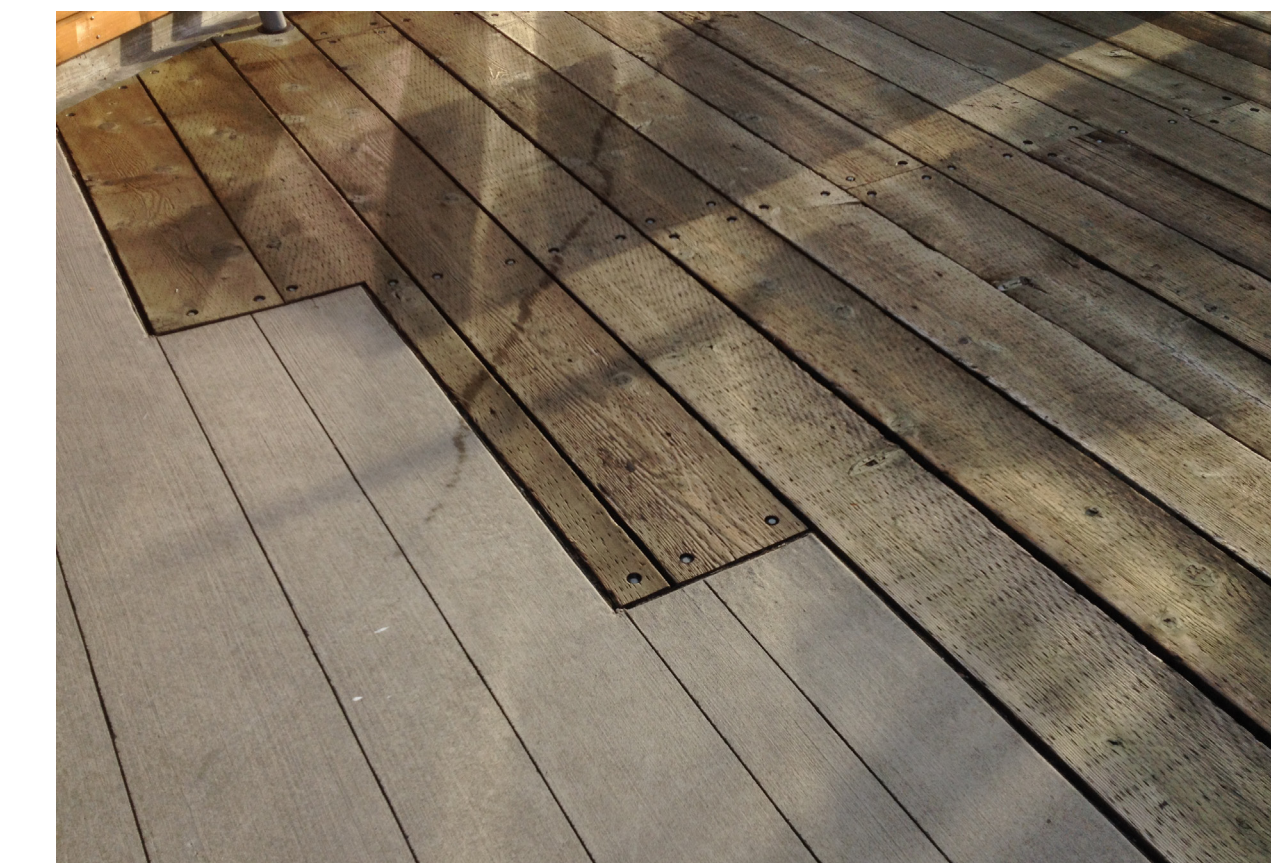
- 1 New 24" HDPE pipe connects existing storm drainage into gravel wetland system.
- 2 Concrete walkway surrounds the perimeter of the gravel wetland
- 3 Forebay #1 collects stormwater flow prior to entering the gravel wetland.
- 4 Type I Stone Inlet Diaphragm.
- 5 Forebay #2 collects stormwater flow prior to entering the gravel wetland.
- 6 Forebay #3 collects stormwater flow prior to entering the gravel wetland.
- 7 Gravel wetland. Volume retained at elevation 172 = 73,000 CF.
- 8 Grassy swale and piped conveyance of stormwater flow from parking lot into Forebay #2.
- 9 Boardwalk overlooks and educational signage.
- 10 Constructed vegetated berm to contain gravel wetland volume.





KEY SITE IMPROVEMENTS

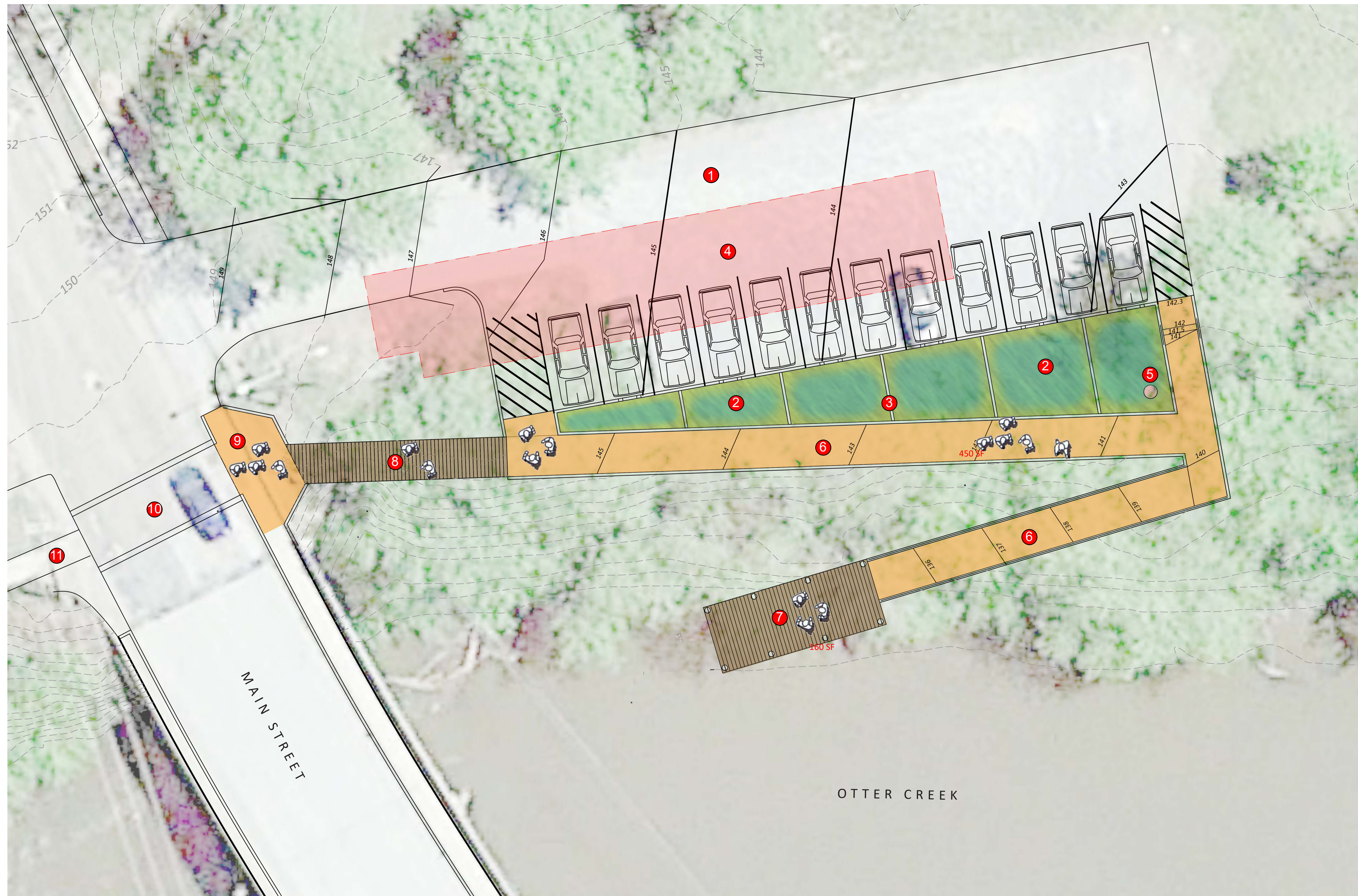
- 1 Stormwater curb extension rain gardens captures stormwater runoff from Main Street and adjacent side streets.
- 2 Stormwater boardwalks allows for pedestrian gathering spaces and allows runoff to be managed underneath.
- 3 Pedestrian sidewalks are expanded and upgraded with new paving, street trees, lighting, and landscaping.
- 4 Pedestrian crossings are narrowed and enhanced with crosswalk paving/markings.
- 5 New bike lanes along Main Street.
- 6 North Green Street parking is expanded by switching to all angled parking and converted the street to one-way travel.
- 7 Main Street parking on south side is switched from angled parking to parallel parking to provide space for pedestrians, bike lanes, and landscaping.
- 8 New bike parking hub along Main Street.
- 9 Mid-block crossing median with landscaping and downtown entrance sign.



ALTERNATIVE 1: Main Street Green Infrastructure and Complete Street Plan: Vergennes, Vermont

Scale: 1"=25'
April 2018





KEY SITE IMPROVEMENTS

- ① Existing Settler's Park parking lot to be repaved and allow for 12 parking spaces including 1 ADA Accessible parking space.
- ② Stormwater planters capture runoff from the parking lot pavement.
- ③ Check dams help slow and retain stormwater runoff and provide a terraced grading of the landscape.
- ④ Subsurface stormwater chambers captures and detains stormwater runoff from Main Street.
- ⑤ Any overflow from the stormwater planter system is routed to the subsurface stormwater chambers.
- ⑥ An accessible walkway allows visitors to access Otter Creek.
- ⑦ A boardwalk canoe/kayak launch area.
- ⑧ A boardwalk connects pedestrians from Main Street to Settler's Park
- ⑨ Sidewalk ramp improvements provides an accessible route across Main Street.
- ⑩ Marked pedestrian crossing across Main Street.
- ⑪ Existing pedestrian access to MacDonough Park to remain.